



SEEQUENT

COLLABORATION WITH 3D GROUNDWATER MODELS

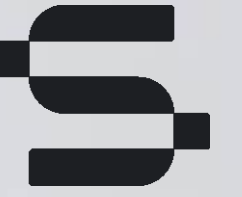
PAT MCLARIN – PRODUCT MANAGER



Enable better decisions
about earth, environment
and energy challenges

Office Locations





Agenda

1. What tools do we bring to the table?

- 3D Modelling
- Visualisation
- Collaboration

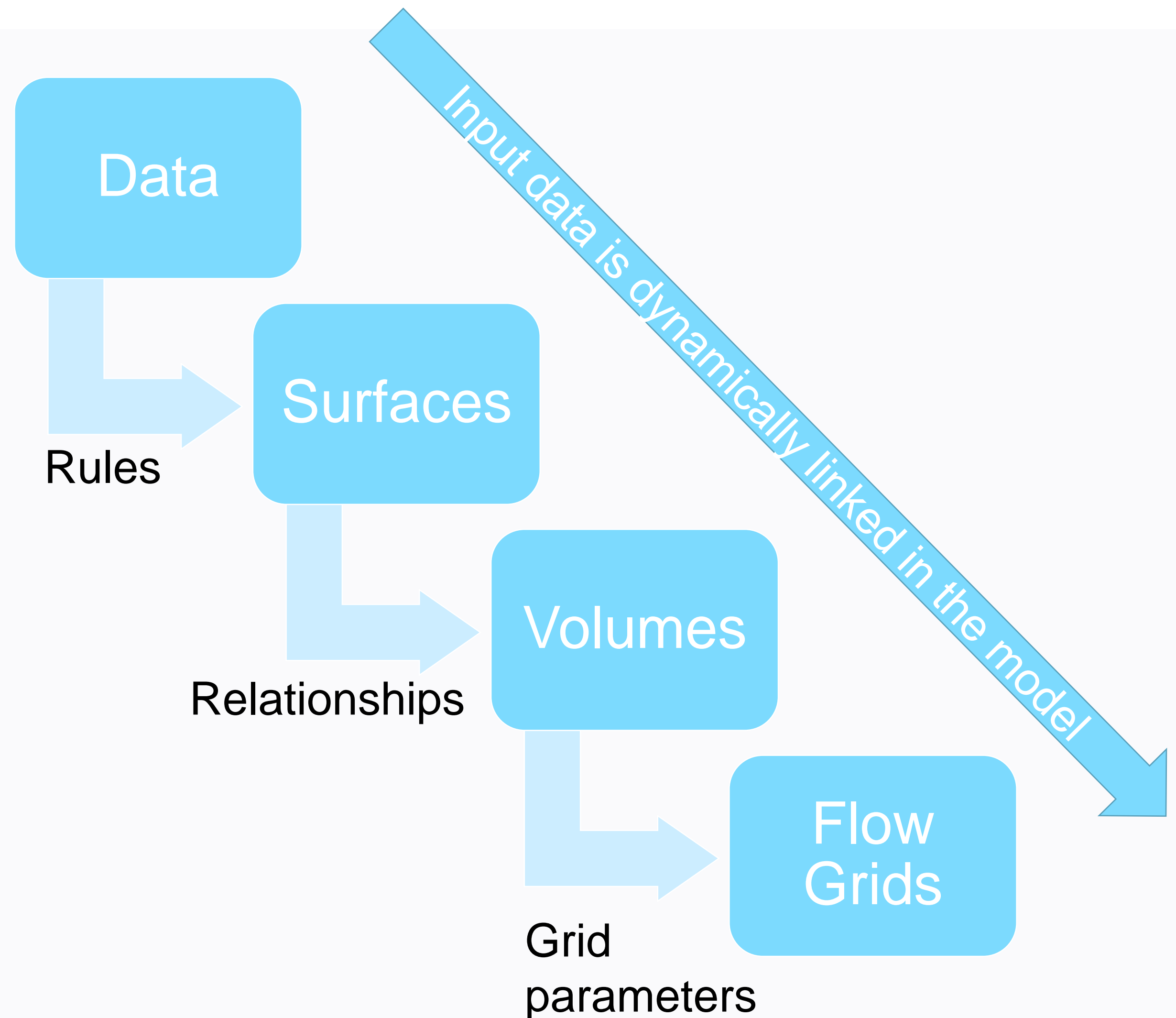
2. What is the problem to solve?

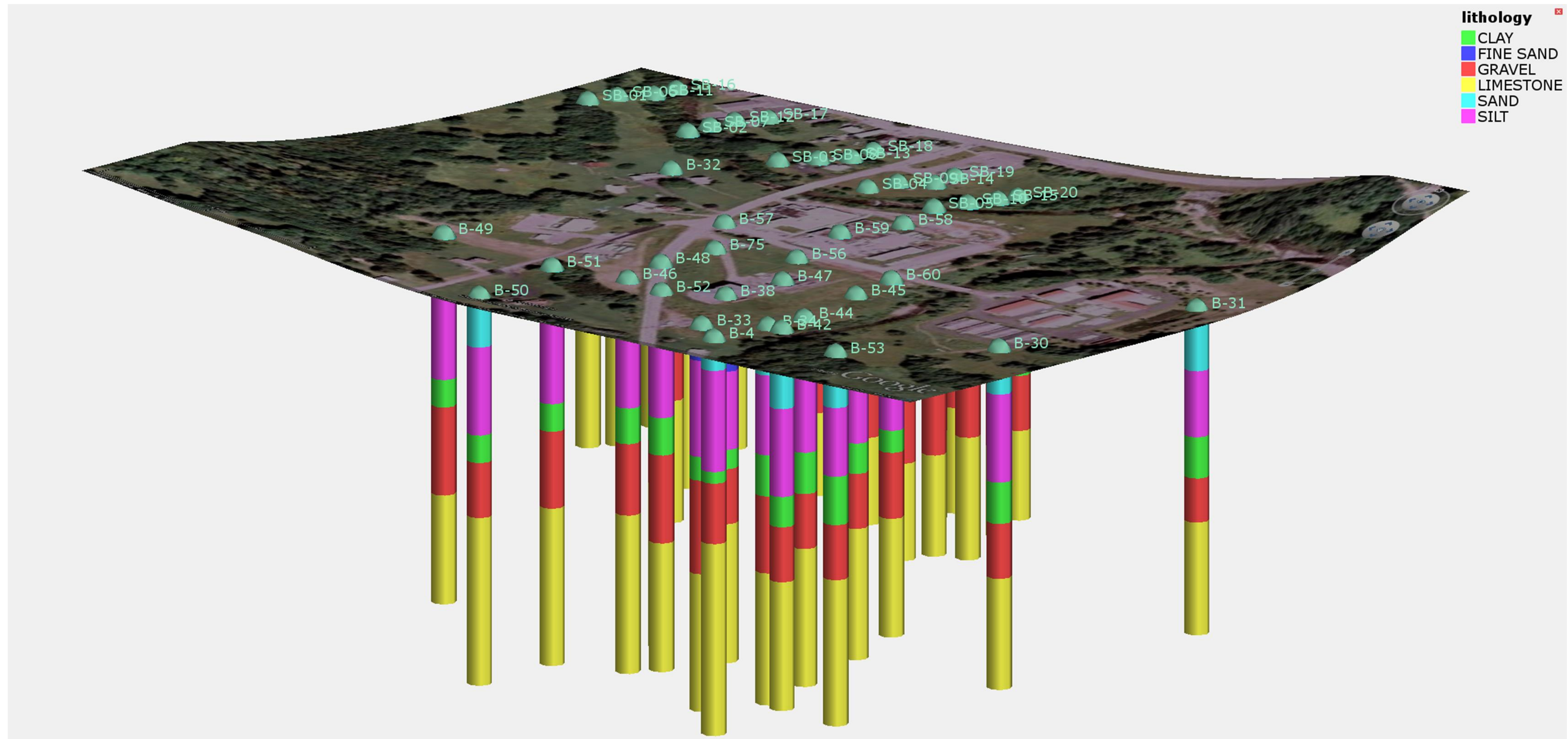
- How can we help?

Geological 3D Models

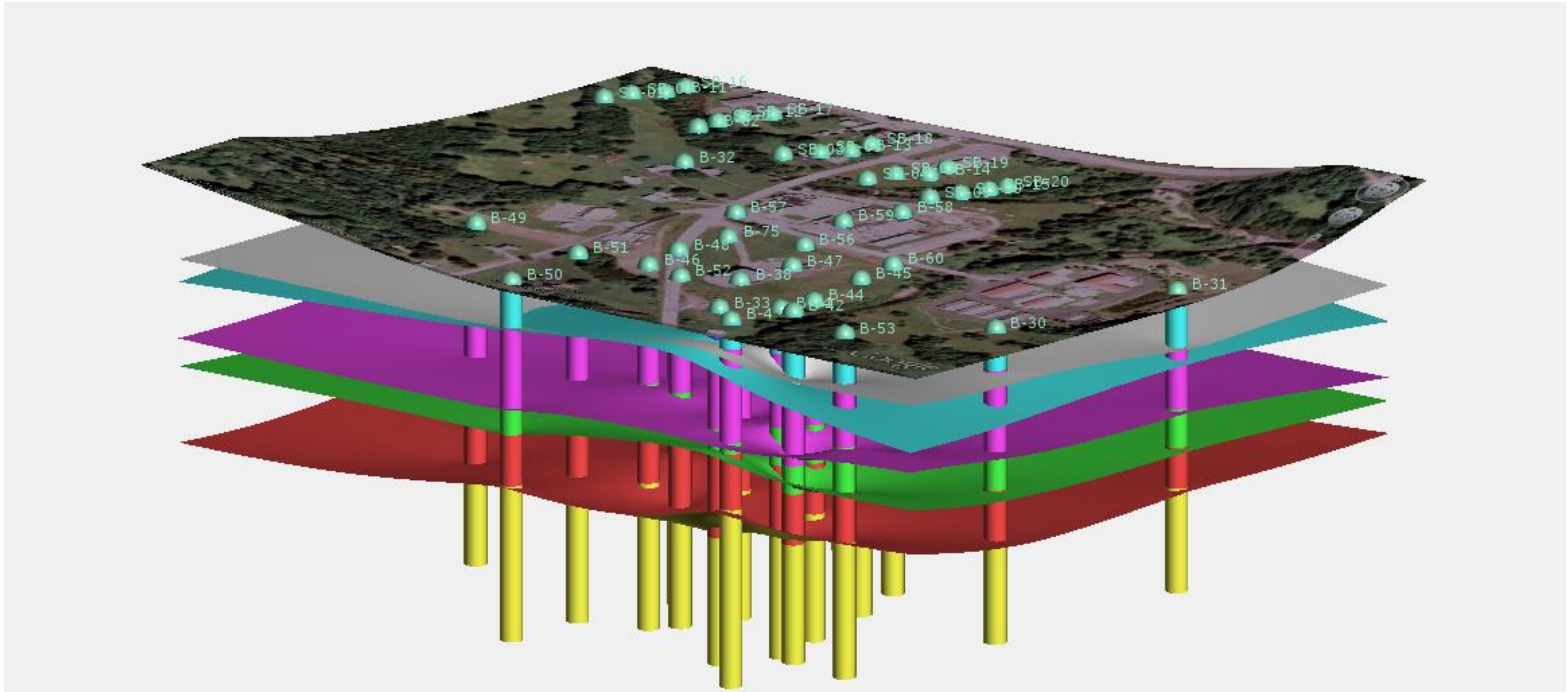


- Dynamic
- Fast
- Implicit
- Geological and Hydrogeological principles



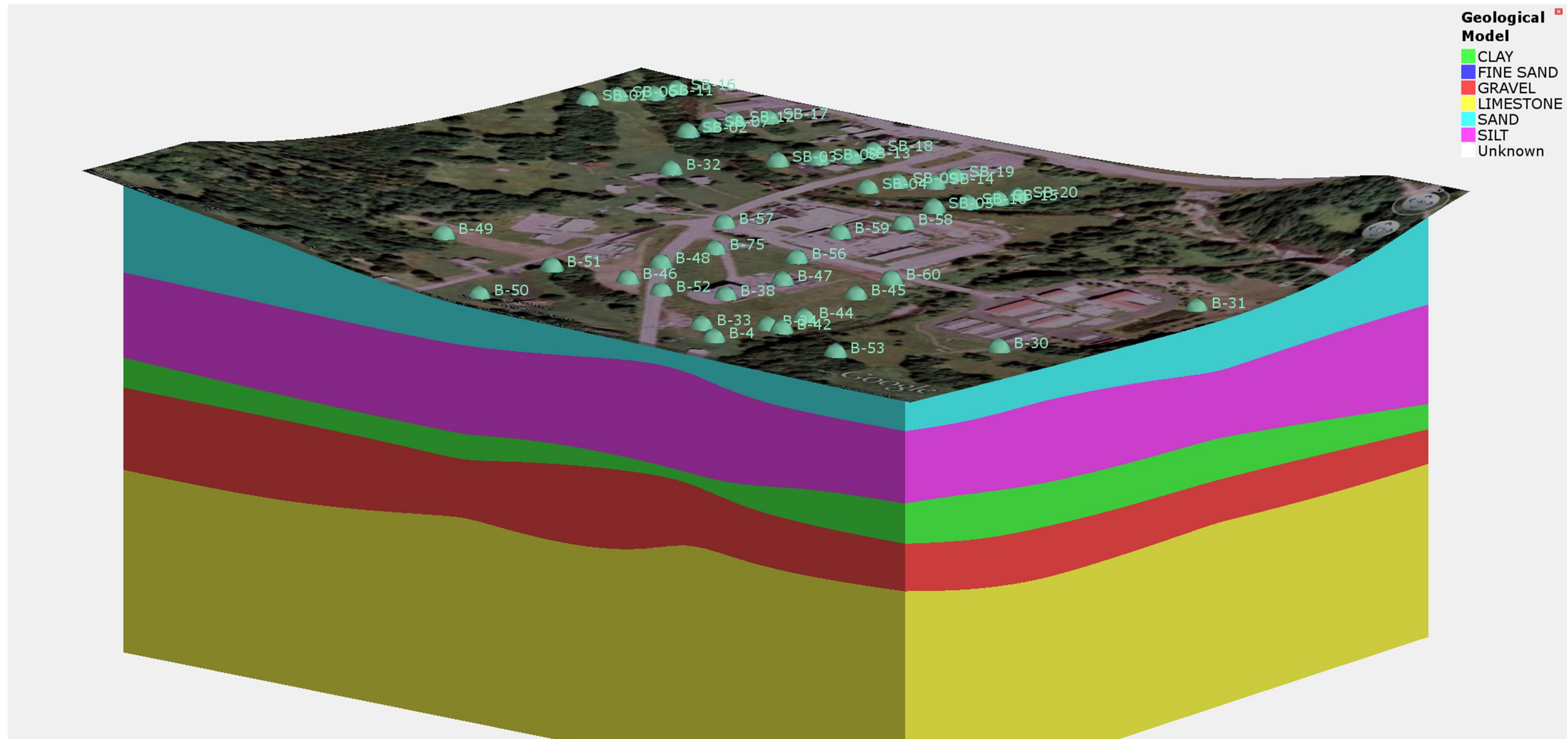


Contact surfaces



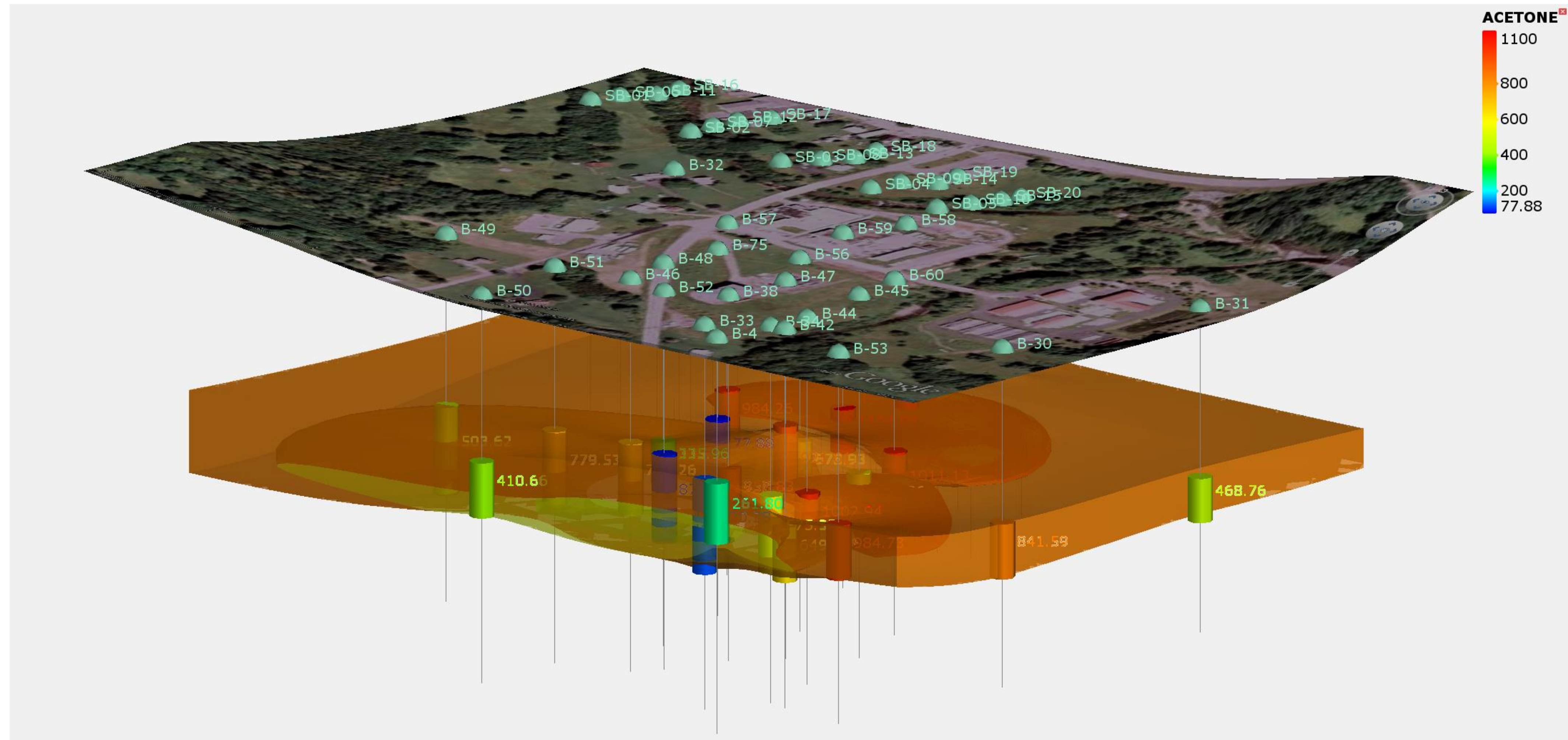


Dynamic geological model



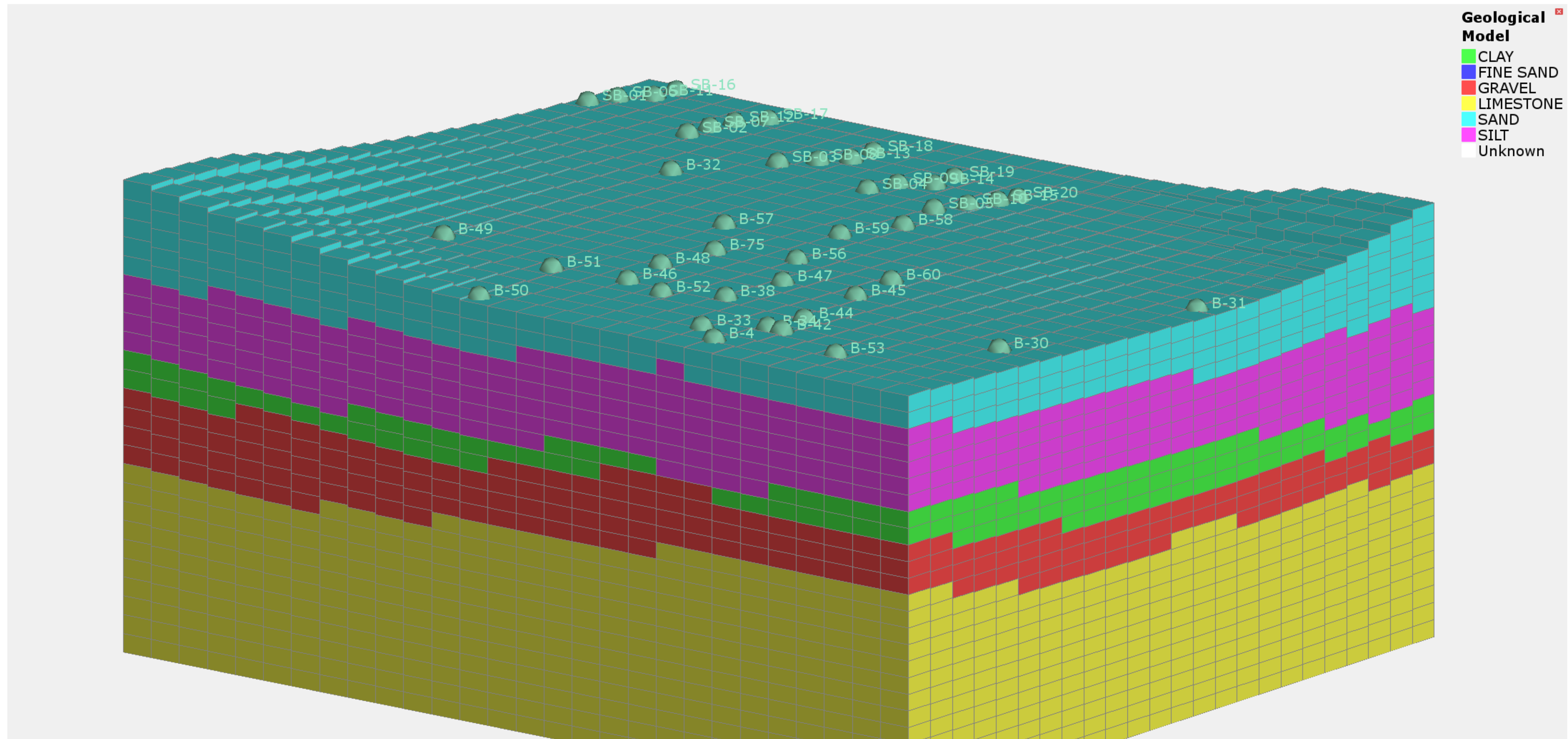


Acetone Contaminant Model constrained to Gravel Aquifer





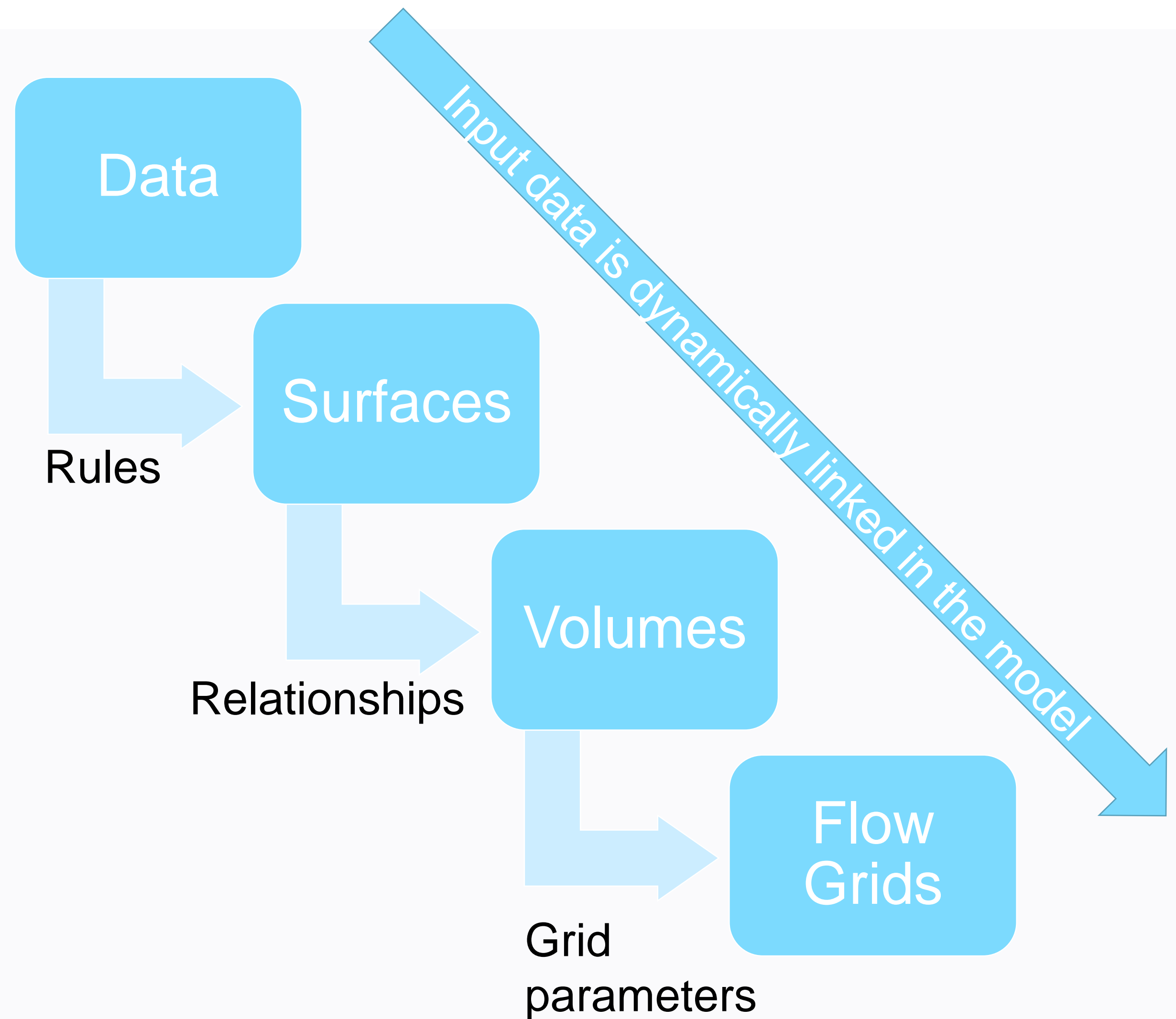
MODFLOW grid for incorporating 3D geology into flow simulation



Geological 3D Models



- Dynamic
- Fast
- Geological and Hydrogeological principles

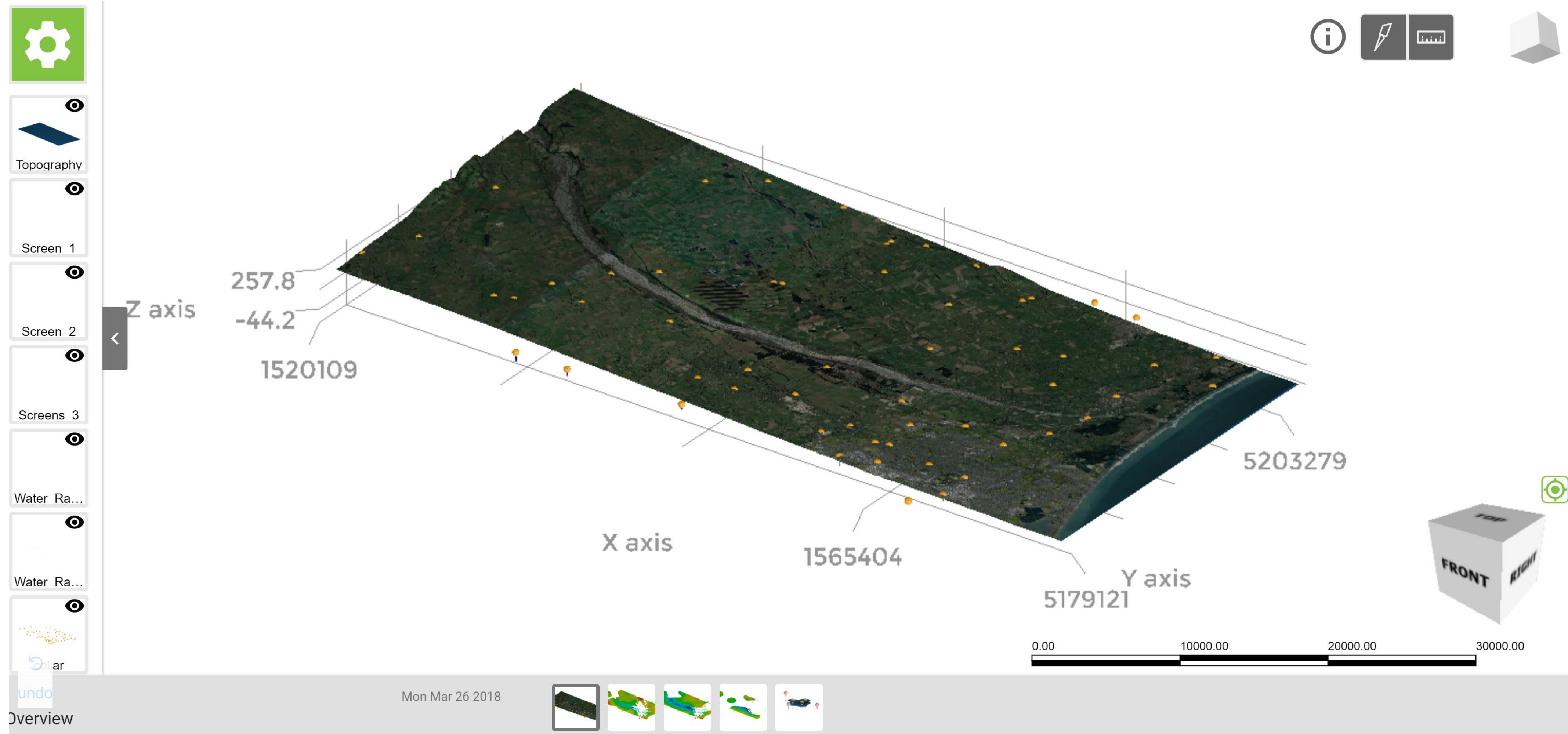


Regional example – Ecan Piezo dataset





Collaboration – share 3D Views directly in your [browser](#)

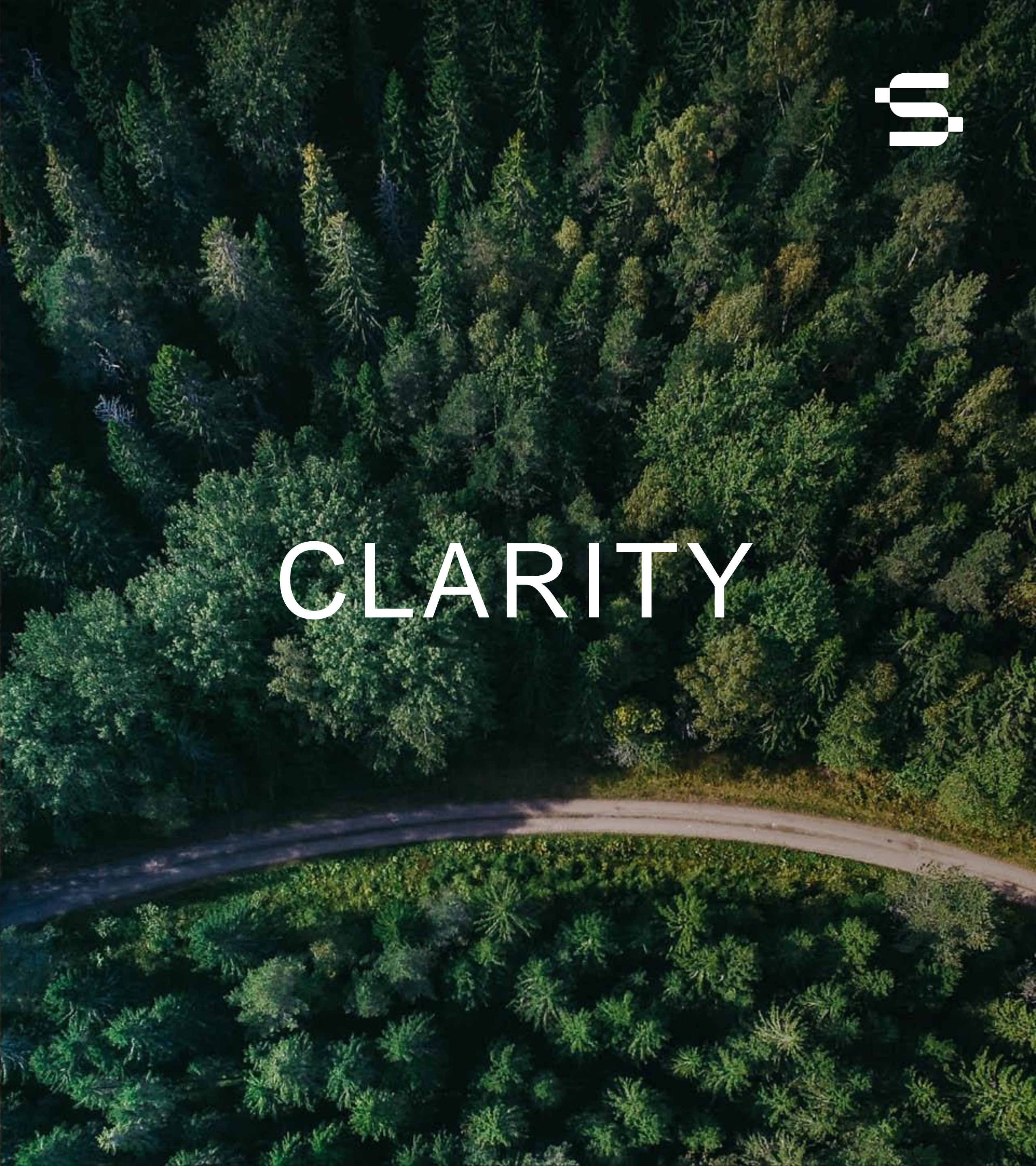


What is the problem to solve?





COMPLEXITY



CLARITY

